



Meaningful Innovation.

WEEE Number: 80133970

INSTRUCTION MANUAL

LED SOLAR STREET LIGHT WITH SOLAR PANEL

TECHNICAL DATA

MODEL	VT-ST63W	VT-ST120W	VT-ST180W
SKU	95532, 98241	95533, 98240, 98417	95534
SOLAR PANEL WATTS	6W	8W	12W
LUMENS	800 lm	1000 lm	1200 lm
BEAM ANGLE	120°	120°	120°
LED CHIP TYPE	2835	2835	2835
NUMBER OF LEDs	60	120	180
CRI	70	70	70
LIFE SPAN	20000 Hours	20000 Hours	20000 Hours
ON/OFF CYCLE	50000 Times	50000 Times	50000 Times
MAXIMUM MOUNTING HEIGHT	3 Meter	4 Meter	5 Meter
OPERATIONAL TEMPERATURE	-20°C to +60°C	-20°C to +60°C	-20°C to +60°C
BATTERY CAPACITY	5000 mAh	9000mAh	10000mAh
BATTERY TYPE	LiFePO4	LiFePO4	LiFePO4
DC VOLTAGE	DC 3.2V	DC 3.2V	DC 3.2V
CHARGING TIME	4-6 Hours	4-6 Hours	4-6 Hours
WORKING TIME	12-15 Hours	12-15 Hours	12-15 Hours
MATERIAL	PC	PC	PC
DIMENSION	360x187x55mm	470x190x55mm	600x197x55mm

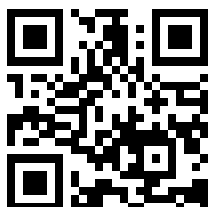


02 YEAR
WARRANTY*

IP65
RATING

INTRODUCTION & WARRANTY

Thank you for selecting and buying V-TAC product. V-TAC will serve you the best. Please read these instructions carefully before starting the installation and keep this manual handy for future reference. If you have any another query, please contact our dealer or local vendor from whom you have purchased the product. They are trained and ready to serve you at the best. The warranty is valid for 2 years from the date of purchase. The warranty does not apply to damage caused by incorrect installation or abnormal wear and tear. The company gives no warranty against damage to any surface due to incorrect removal and installation of the product. The products are suitable for 10-12 Hours Daily operation. Usage of product for 24 Hours a day would void the warranty. This product is warranted for manufacturing defects only.



MULTI-LANGUAGE MANUAL QR CODE

Please scan the QR code
to access the manual in
multiple languages.



FR
Cet appareil,
ses accessoires,
cordons et batteries
se recyclent

À DÉPOSER
EN MAGASIN



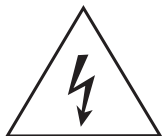
À DÉPOSER
EN DÉCHÈTERIE

Points de collecte sur www.quefairedemesdechets.fr
Privilégiez la réparation ou le don de votre appareil !

IN CASE OF ANY QUERY/ISSUE WITH THE PRODUCT, PLEASE REACH OUT TO US AT: SUPPORT@V-TAC.EU
FOR MORE PRODUCTS RANGE, INQUIRY PLEASE CONTACT OUR DISTRIBUTOR OR NEAREST DEALERS.
V-TAC EUROPE LTD. BULGARIA, PLOVDIV 4000, BUL.L.KARAVELOW 9B

WARNING

1. Installation must be performed by a qualified electrician.
2. The light source of this luminaire is not replaceable; when the light source reaches its end of life the whole luminaire shall be replaced.

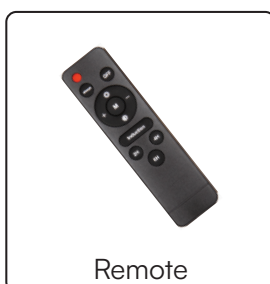


Caution, risk of electric shock.

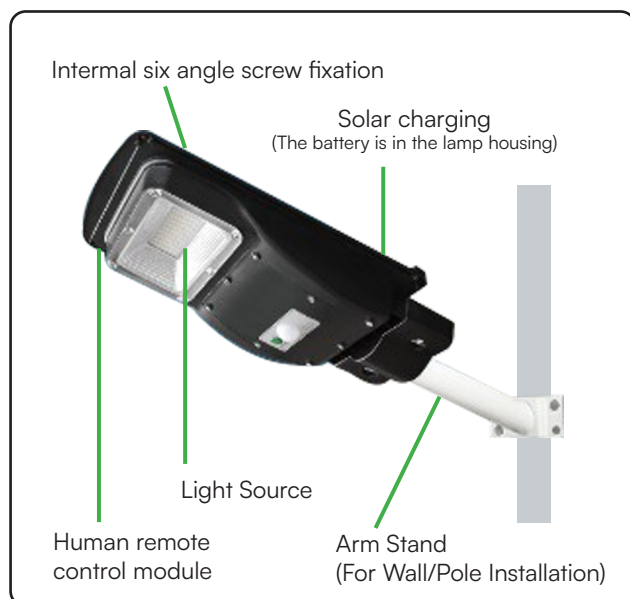


This marking indicates that this product should not be disposed of with other household wastes.

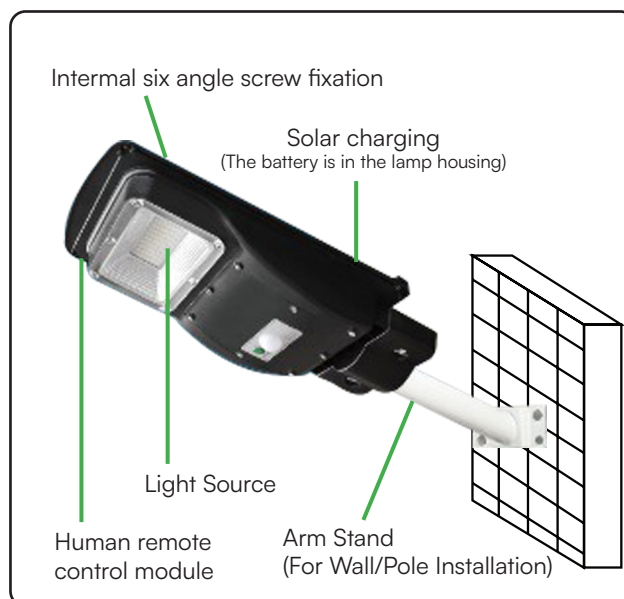
PACKAGE CONTENT



LAMP POST INSTALLATION



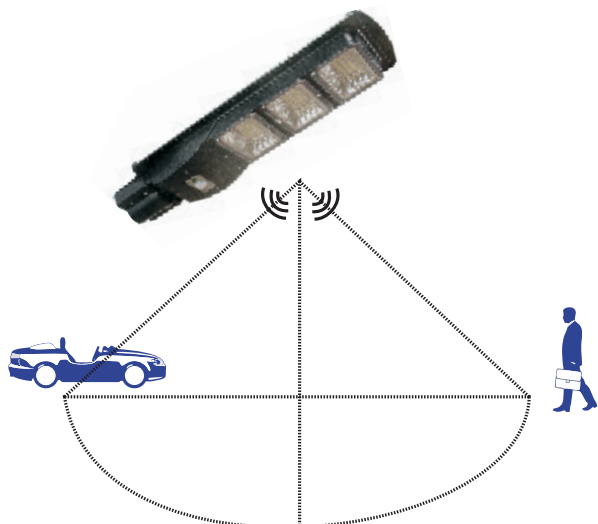
WALL MOUNT INSTALLATION



INSTALLATION INSTRUCTIONS

- Before installing please remove all the parts to check if all are in good condition or not.
 - Install the Arm Stand on a wall or on a Lamp Pole with the Expansion Screws
 - Ensure the solar panel faces the sunlight. Adjust the angle using the inner six-angle screw to maximize sun exposure.
 - After installation test the light using the remote control.
 - The remote control is designed with an operation distance of 8-10m
-

FUNCTIONAL MODES



1. First mode

Long press 5-8 seconds Radar mode, Moving objects into the sensing area, All the lights are on. Leave sensing area, Light opening.(Human sensor is effective)

2. Second mode

(1seconds press): Light on medium brightness (Radar-induction is not effective)

3. Third mode

(1seconds press): Off

REMOTE CONTROLLER INSTRUCTIONS

Open when dark
Then comes to
Full light mode

High bright

Half light mode

2 hour regular



OFF

Full light mode

Low bright

Open when dark
Then comes to
Sensor Mode

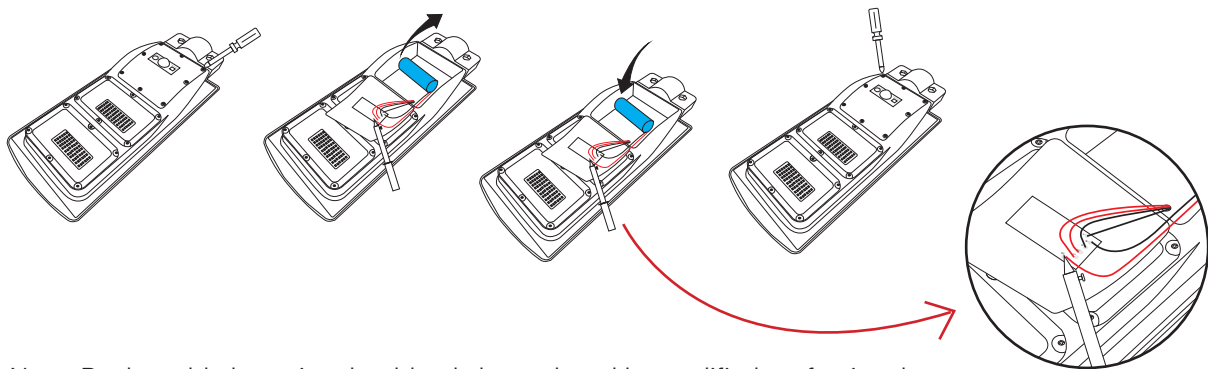
4 hour regular

6 hour regular

SOLAR PANEL MAINTENANCE & WARNING

- Do not use solvents, petrol, etc. Otherwise the light will be damaged.
 - Clean the light with a dry, lint-free cloth.
 - Check the solar panel for dirt regularly. If dirt or is present remove it to guarantee flawless function of the product.
 - Especially during the winter, keep the product free from snow and ice.
 - Confirm installation direction is correct (solar panel should be at top).
 - Confirm no objects blocking the solar panel to receive sunlight.
 - Keep away from the fire.
 - Don't immerse in the water.
-

BATTERY REPLACEMENT DIAGRAM



Note: Replaceable batteries should only be replaced by qualified professionals.

IMPORTANT NOTES

- This product contains battery type “Secondary” (rechargeable).
- Electrical and electronic equipment that has become waste is known as old equipment/device. Old devices must not be disposed of with other household waste.
- Owners of old devices at the end of its service life must return the device by taking them to the collection points set up by public waste disposal authorities or distributors. This return does not entail any costs for you.
- Owners of old devices have an obligation to remove accessible batteries / rechargeable batteries as well as non-destructively removable lamps from the old device prior to return. This does not apply if old devices are being prepared for reuse with the participation of a public law firm.
- Battery removal warning: The battery contained in this product must be removed only by professional personnel only. The battery must never be removed by the end user, if not removed correctly it could damage the battery which could cause fire.
- Batteries removed from an old electronic device should be disposed of separately. This return of battery does not entail any costs for you and the user is obliged to return the battery.
- Please make sure that this product is not powered on when removing the battery. Fire hazard! Avoid short-circuiting the contacts of a detached battery. Do not incinerate the battery. Please handle the battery with Caution!
- If electrical appliances or batteries are disposed of in landfills or dumps, hazardous substances can leak into the groundwater and get into the food chain, damaging your health and well-being.



- The symbol of “Crossed rubbish bins” indicates that this product should not be disposed of with other household wastes and must be collected separately from unsorted municipal waste at the end of its service life.
- Please use the link below to view the online directory of the collection and return points: <https://www.ear-system.de/ear-verzeichnis/sammel-und-ruecknahmestellen>

V-TAC WEST EUROPE LTD. IN CASE OF ANY QUERY/ISSUE WITH THE PRODUCT, PLEASE REACH OUT TO US AT: SUPPORT@V-TAC.EU
FOR MORE PRODUCTS RANGE, INQUIRY PLEASE CONTACT OUR DISTRIBUTOR OR NEAREST DEALERS.
V-TAC WEST EUROPE LTD. GROUND FLOOR, 71 LOWER BAGGOT STREET, DUBLIN 02, IRELAND D02 P593

V-TAC UK LTD. IN CASE OF ANY QUERY/ISSUE WITH THE PRODUCT PLEASE REACH OUT TO US AT
SUPPORT@VTACEXPORTS.COM V-TAC, 5A TUNGSTEN PARK, DOWNS ROAD, WITNEY, OXFORDSHIRE, OX29 0AX

