



Meaningful Innovation.

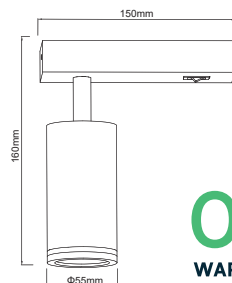
WEEE Number: 80133970

INSTRUCTION MANUAL WALL LIGHT FITTING



TECHNICAL DATA

Model	VT-708
SKU No.	10294,10295
Unit Color	Black,White
Holder	GU10 (Holder Included)
Protection Rating	IP20
Unit size	160*Φ50*150mm



03 YEAR
WARRANTY*

INTRODUCTION & WARRANTY

Thank you for selecting and buying V-TAC product. V-TAC will serve you the best. Please read these instructions carefully before starting the installation and keep this manual handy for future reference. If you have any another query, please contact our dealer or local vendor from whom you have purchased the product. They are trained and ready to serve you at the best. The warranty is valid for 3 years from the date of purchase. The warranty does not apply to damage caused by incorrect installation or abnormal wear and tear. The company gives no warranty against damage to any surface due to incorrect removal and installation of the product. The products are suitable for 10-12 Hours Daily operation. Usage of product for 24 Hours a day would void the warranty. This product is warranted for manufacturing defects only



MULTI-LANGUAGE MANUAL QR CODE

Please scan the QR code to access the manual in multiple languages.

IN CASE OF ANY QUERY/ISSUE WITH THE PRODUCT, PLEASE REACH OUT TO US AT: SUPPORT@V-TAC.EU
FOR MORE PRODUCTS RANGE, INQUIRY PLEASE CONTACT OUR DISTRIBUTOR OR NEAREST DEALERS.
V-TAC EUROPE LTD. BULGARIA, PLOVDIV 4000, BUL.L.KARAVELOW 9B

WARNING

- Ensure Electricity is switched off before installation.
- Please read through all following instruction before installing the unit.
- User should prepare necessary accessories and spare parts (Not Provided)
- Installation must be performed by a qualified electrician.

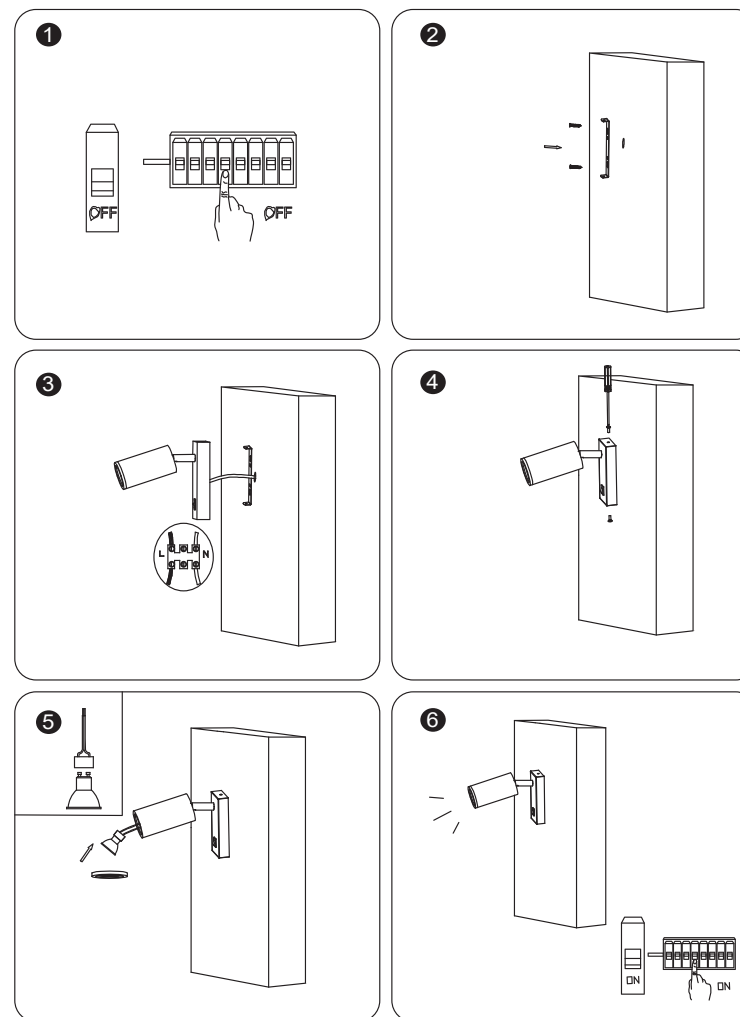


This marking indicates that this product should not be disposed of with other household wastes.



Caution, risk of electric shock.

INSTALLATION DIAGRAM



INSTALLATION INSTRUCTION

- Switch off the power.
- Cut appropriate size hole on the wall. Put the rubber plug into the hole.
Fix the bracket on the wall with screw.
- Connect the AC power supply.
- Install the lamp body into the bracket and tighten the screw safely and solidly.
- Remove the lamp cover from the lamp body by rotating anti-clockwise.
- Install the Bulb GU10 (Not Included) into the lamp holder.
- Install the lamp cover to the lamp body by rotating clockwise.
- Switch on and test

RoHS   