

# V-TAC

Meaningful Innovation.

WEEE Number: 80133970

## INSTRUCTION MANUAL

### GARDEN SPIKE LAMP OUTDOOR SERIES

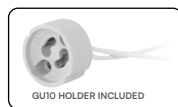
#### TECHNICAL DATA

MODEL	VT-1126
SKU	10373
RATED LOAD	35W
BASE	GU10 (Bulb not included)
MATERIAL	Aluminium
DIMENSION	Ø75x106x245mm
INPUT VOLTAGE	AC: 220-240V, 50Hz



IP65  
RATING

03  
YEAR  
WARRANTY



#### INTRODUCTION

Thank you for selecting and buying V-TAC product. V-TAC will serve you the best. Please read these instructions carefully before starting the installation and keep this manual handy for future reference. If you have any other query, please contact our dealer or local vendor from whom you have purchased the product. They are trained and ready to serve you at the best. The warranty is valid for 3 years from the date of purchase. The warranty does not apply to damage caused by incorrect installation or abnormal wear and tear. The company gives no warranty against damage to any surface due to incorrect removal and installation of the product. The products are suitable for 10-12 Hours Daily operation. Usage of product for 24 Hours a day would void the warranty. This product is warranted for manufacturing defects only.

#### WARNING!

1. Please make sure to turn off the power before starting the installation.
2. Installation should only be done by a certified electrician.
3. Proper grounding should be ensured throughout the installation.
4. Waterproof Box not included.



This marking indicates that this product should not be disposed of with other household wastes.



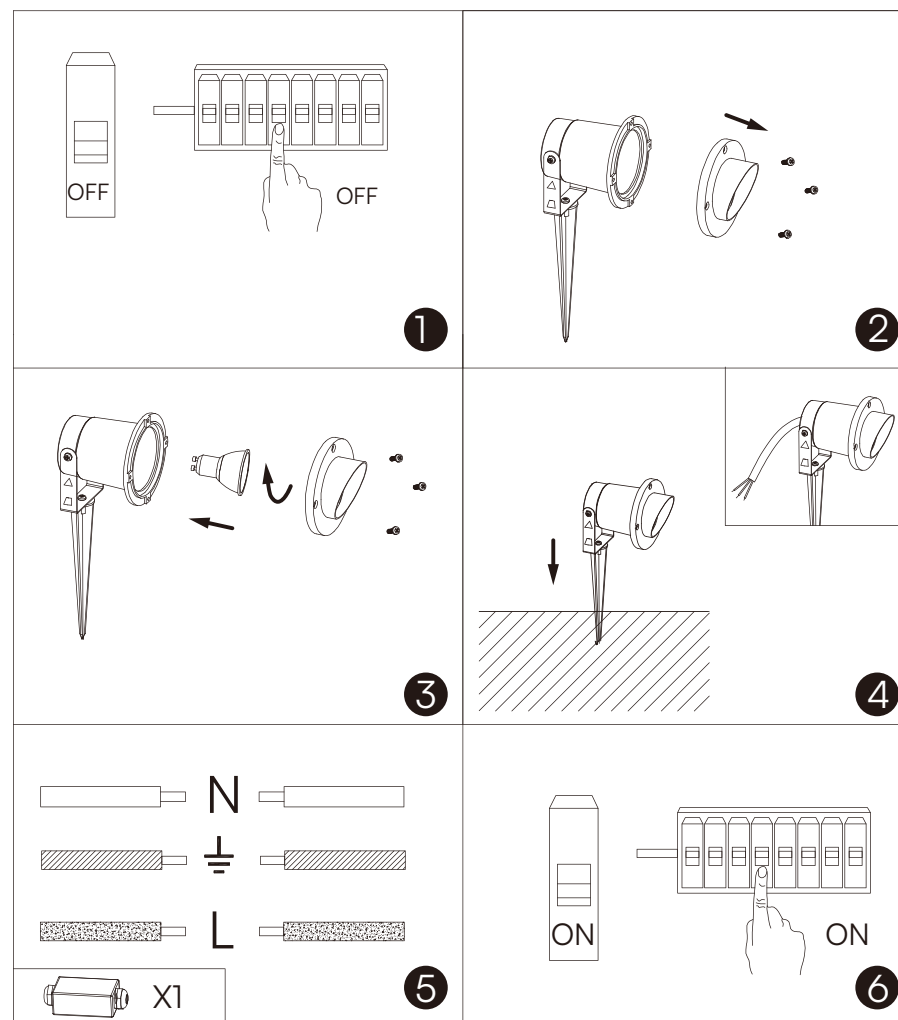
Caution, risk of electric shock.



#### MULTI-LANGUAGE MANUAL QR CODE

Please scan the QR code to access the manual in multiple languages.

#### INSTALLATION DIAGRAM:



#### INSTALLATION INSTRUCTION

- Turn off the power switch.
- Remove the front ring of the lamp.
- Install the light source (GU10).
- ASSEMBLE the lamps and lanterns.
- Connect to the power supply according to the drawing.
- Switch on the power if above steps are done properly without any mistakes.