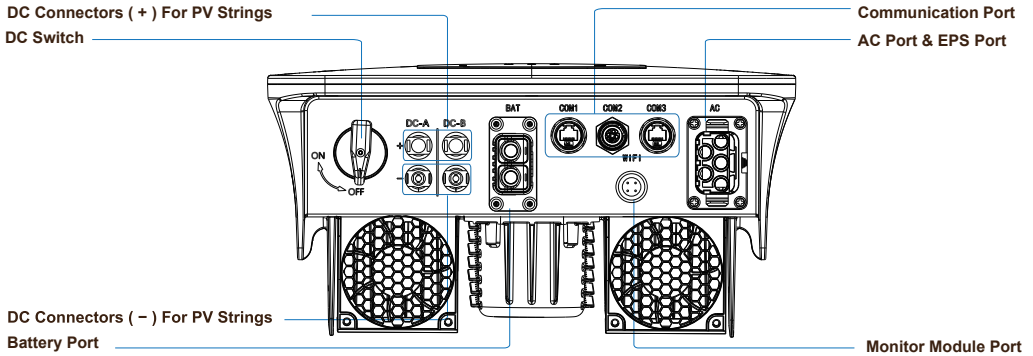


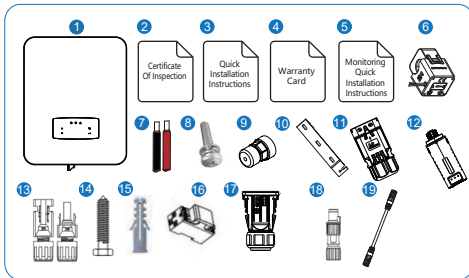
QUICK INSTALLATION GUIDE

OVERVIEW



PACKAGE LIST

Please check to make sure the packing and all components are not missing or damaged. Please contact your dealer directly for supports if there is any damage or missing components.



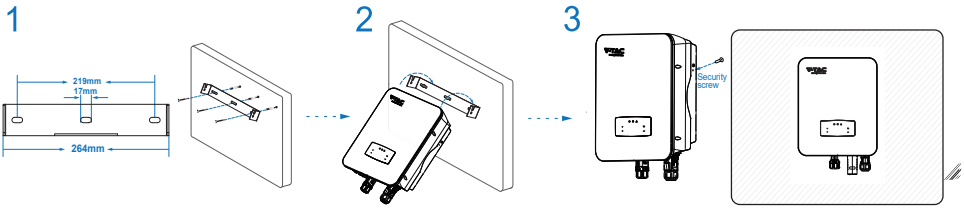
No.	Qty	Items	No.	Qty	Items
1	1	Hybrid Inverter	11	1	Battery Connector
2	1	Certificate Of Inspection	12	1	Monitor Module
3	1	Quick Installation Instructions	13	2	DC Connector
4	1	Warranty Card	14	3	Mounting Bracket Screw
5	1	Monitoring Quick Installation Instructions	15	3	Plastic Expansion Tube
6	1	CT	16	1	Smart Meter (Optional)
7	1	Battery wire	17	1	AC Waterproof Cover
8	1	Security Screw	18	1	Meter Connectors
9	3	Communication Connectors	19	2	Communication T568B
10	1	Wall Mounting Bracket			



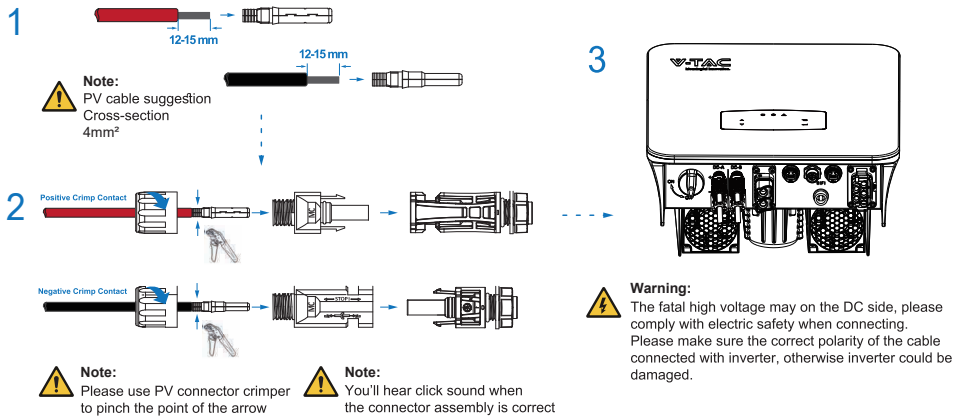
MULTI-LANGUAGE MANUAL QR CODE

Please scan the QR code to access the manual in multiple languages.

MOUNTING

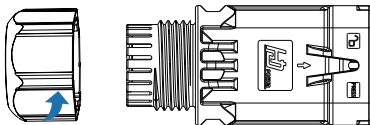


PV CONNECTION

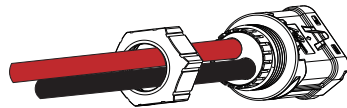


BATTERY CONNECTION

- 1 Rotate counterclockwise and remove mounting bracket screw nut.

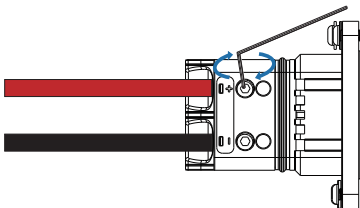


- 2 Pass the battery wire with the correct polarity through the nut and installation bracket.

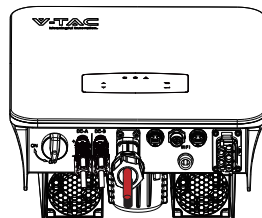


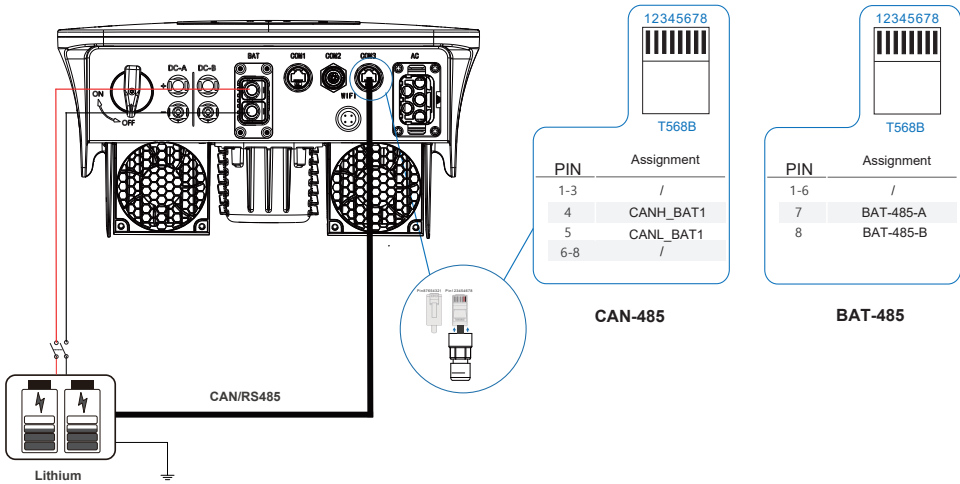
Note:
 ⚠ Battery cable suggestion
 Cross-section 4 AWG.

- 3 Insert the battery wire into the corresponding terminal and lock it with a hexagon wrench.

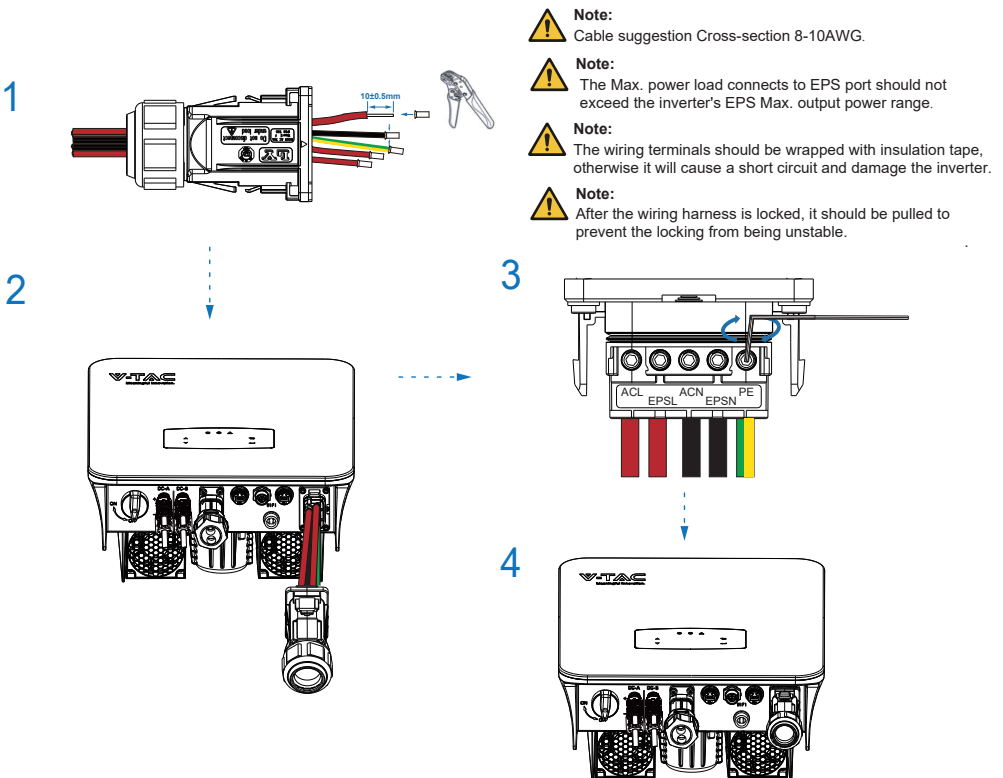


- 4 Insert the battery connector into the inverter, if you hear a "click", it means the battery connection is finished.

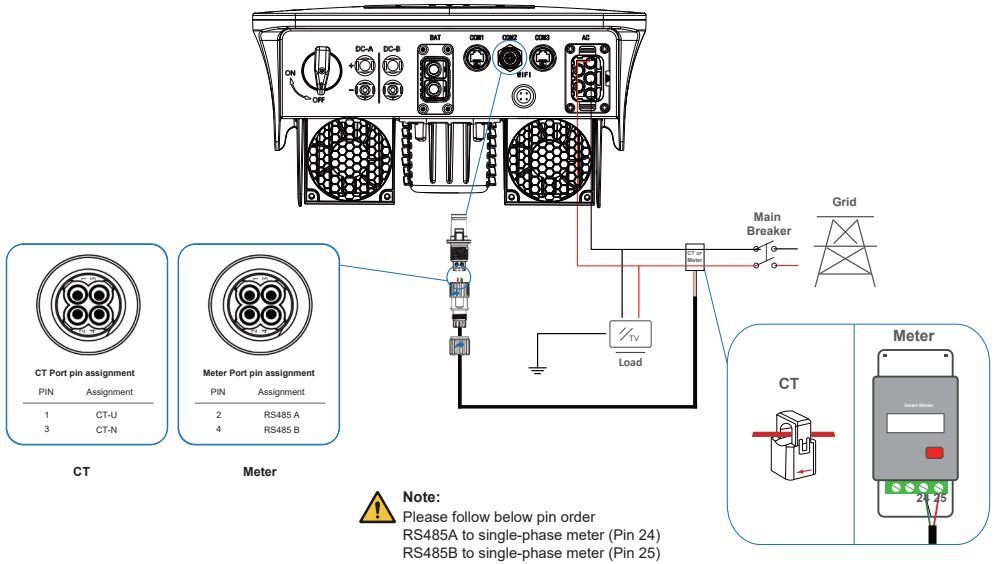




GRID AND EPS CONNETION



CT OR METER CONNECTION



WIFI CONNECTION

