

V-TAC



Meaningful Innovation.

WEEE Number: 80133970

INSTRUCTION MANUAL

INFRARED DOOR SENSOR

TECHNICAL DATA

MODEL	VT-81012
SKU	23428
INPUT VOLTAGE	AC: 220-240V, 50/60 Hz
RATED CURRENT	5A
RATED LOAD	Max. 500W  200W  +LED
DETECTION DISTANCE	5-6cm
WORKING TEMPERATURE	-20°C to +50°C
IP RATING	IP20
DIMENSION	90x40.2x16.8 mm



COMPATIBLE WITH

V-TAC LED
RANGE (UPTO 200W)

05 YEAR
WARRANTY*

INTRODUCTION & WARRANTY

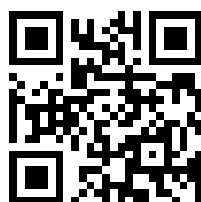
Thank you for selecting and buying V-TAC product. V-TAC will serve you the best. Please read these instructions carefully before starting the installation and keep this manual handy for future reference. If you have any another query, please contact our dealer or local vendor from whom you have purchased the product. They are trained and ready to serve you at the best. The warranty is valid for 5 years from the date of purchase. The warranty does not apply to damage caused by incorrect installation or abnormal wear and tear. The company gives no warranty against damage to any surface due to incorrect removal and installation of the product.



Caution, risk of electric shock.



This marking indicates that this product should not be disposed of with other household wastes.



MULTI-LANGUAGE MANUAL QR CODE

Please scan the QR code to access the manual in multiple languages.



FR
Cet appareil,
ses accessoires
et cordons
se recyclent

À DÉPOSER
EN MAGASIN

À DÉPOSER
EN DÉCHÈTERIE



Points de collecte sur www.quefairedemesdechets.fr
Privilégiez la réparation ou le don de votre appareil !

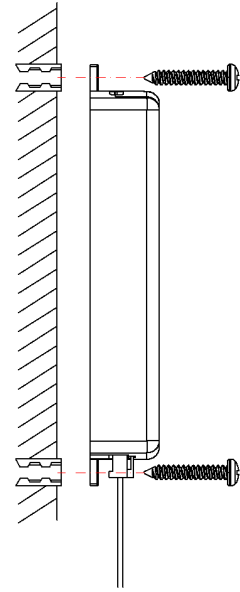
In case of any query/issue with the product, please reach out to us at: support@v-tac.eu
For More products range, inquiry please contact our distributor or nearest dealers.
V-TAC EUROPE LTD. Bulgaria, Plovdiv 4000, bul.L.Karavelow 9B

WARNING

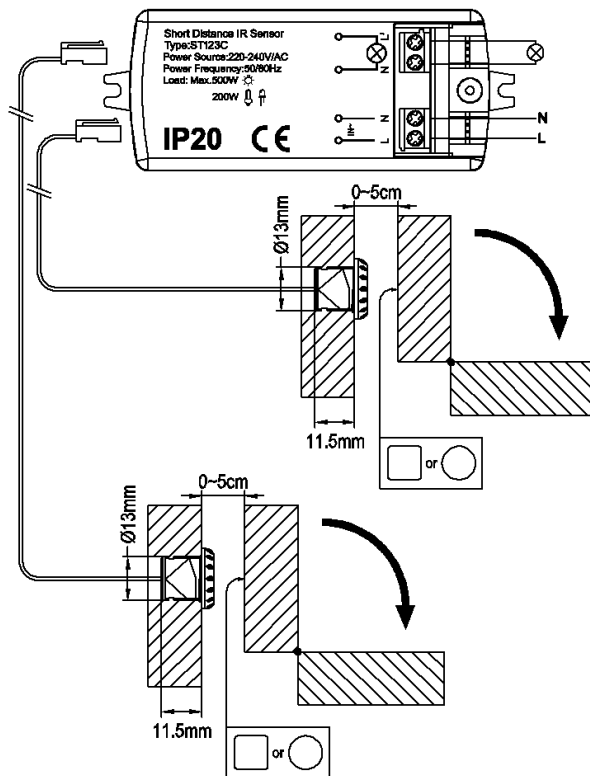
1. Please make sure to turn off the power before starting the installation.
2. Installation must be performed by a qualified electrician.
3. Cover or shield any adjacent live components.
4. For indoor use only.

INSTALLATION

1. Switch off the power.
2. Install the product on the wall with two enclosed inflated screws.
3. Connect the sensor with power supply and the load as per the connection-wire diagram. Then turn on the power and test it.



WIRING DIAGRAM



1. When the door opening (>5cm), the lights will be turned on.

2. When both of the 2 doors being closed, the lights will be turned off

To get better sensitivity, you can paste one silver label as picture on the door facing to the sensor

TEST

Turn on the Power, when you open 1 door or 2 doors, the sensor detects the motion and turns on the lights. The lights will be switched off until both of the 2 doors are closed.

NOTE

Within the detection field, there shouldn't be any hindered or unrest objects affecting detection.

RoHS



UK
CA

