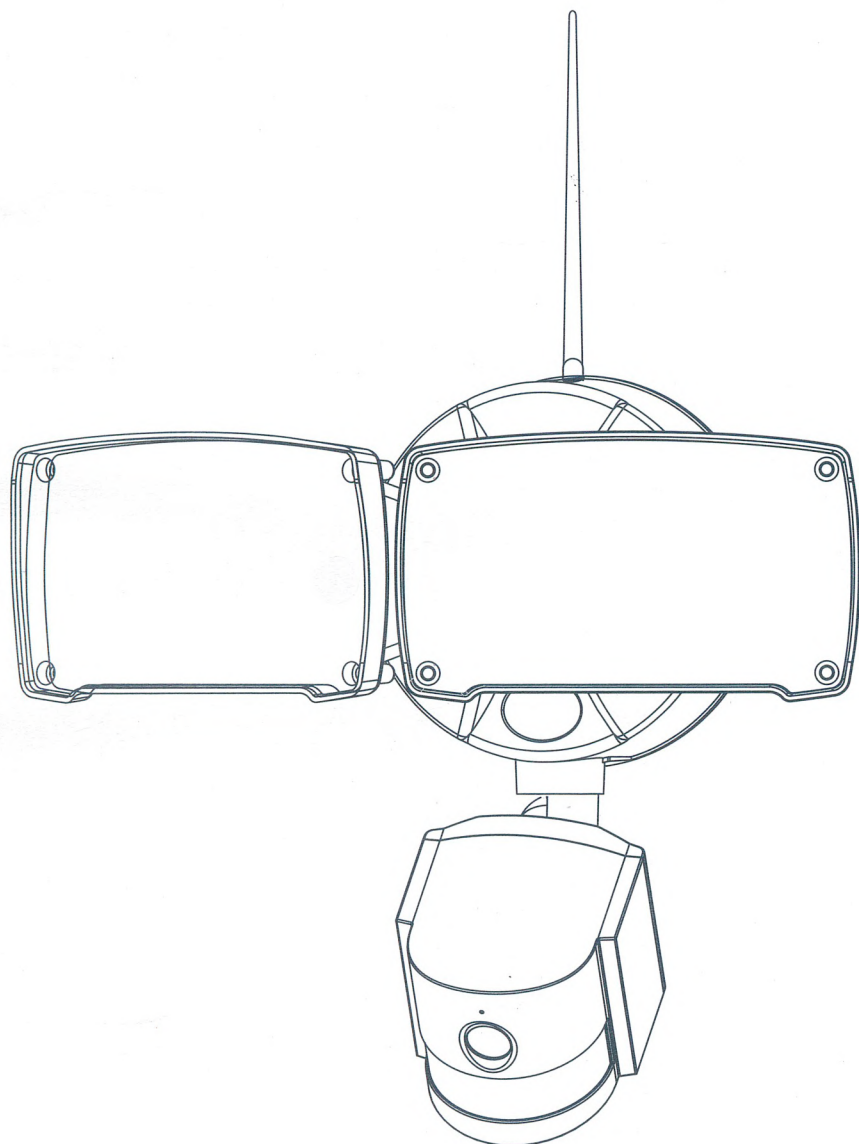
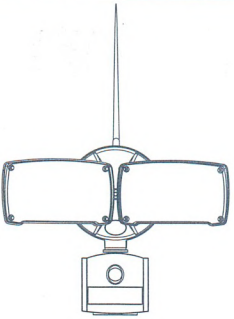


LED Security Light with WIFI Camera



PARTS LIST

	 (A): Screw (Painted Green)/1PC	 (E): Ring/Qty. 1PC; Nut/Qty. 1PC
	 (B): Screw/3PCS	 (F): EVA Gasket /1PC
	 (C): Wire Nuts / 3PCS	 (G): Antenna/1PC
	 (D): Crossbar / 1PC	

TOOLS REQUIRED (not included)

 Flathead Screwdriver	 Screwdriver	 Silicone Sealant	 Step Ladder	 Eye Protection	 Pliers
--------------------------	-----------------	----------------------	-----------------	--------------------	------------

1. Mobile APP Download & Installation

1.1: Android APP Download

Search the App "iSmsee 8.0" in the Explorer or Google Play. Download & install iSmsee APP into your phone.

1.2: IOS APP Download

Search the App iSmsee from the APP Store. Download and install iSmsee APP into your phone.

2. Add Camera into the APP

IMPORTANT:

PLEASE ADD CAMERA TO THE APP AFTER CONNECTING TO POWER FOR AT LEAST 90s. WIFI IS MANDATORY WHEN YOU CONNECT CAMERA INTO APP.

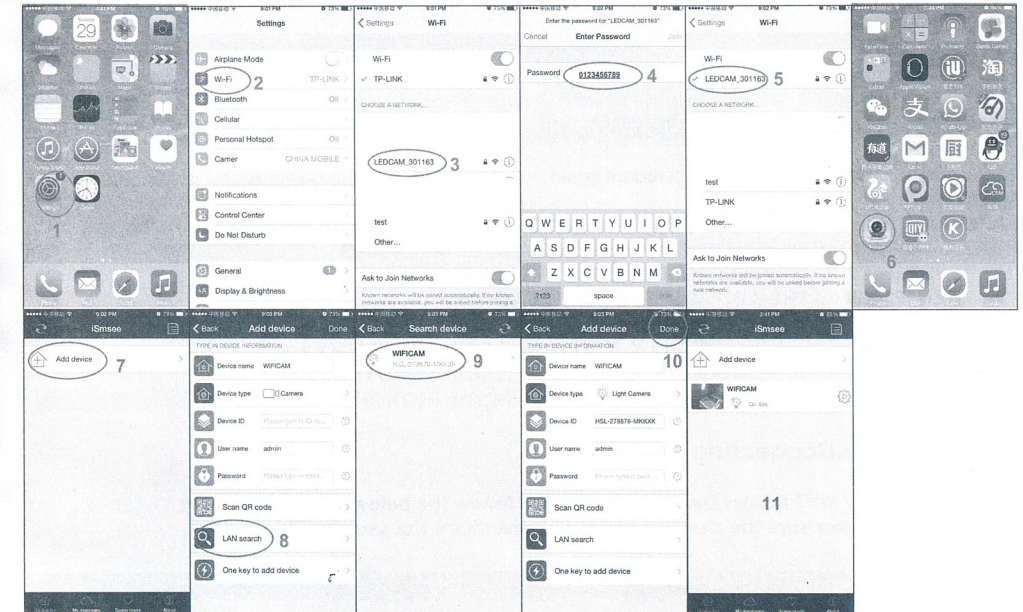
3 ways of connections to App: LEDCAMXX Connecting, LAN Cable Connecting & LAN Search.

2.1: LEDCAM_XXX Connecting (Hot Spot Connecting)

Firstly, Connect the Camera to your phone

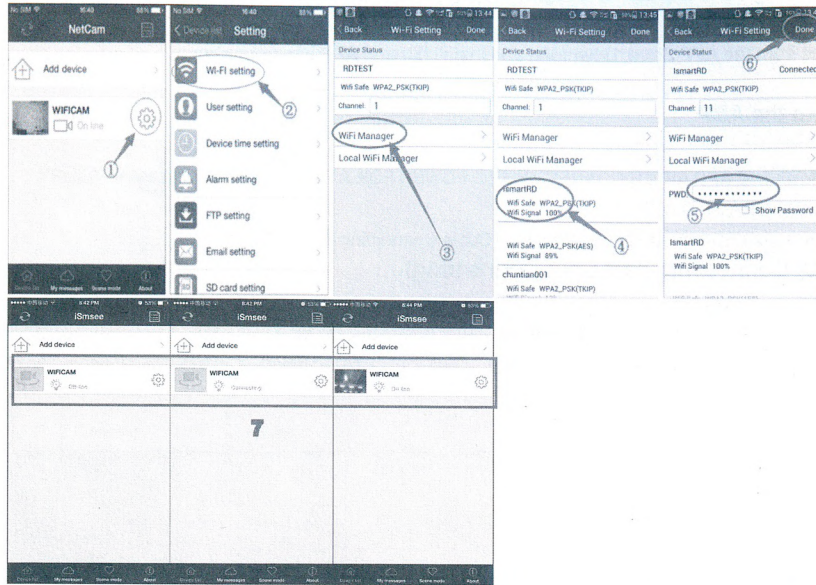
→Settings → WIFI → LEDCAMXXX → Input PW (0123456789) → (after connecting to the LEDCAMXXX hot spot, back to home page) → Open ISMSEE APP → ADD Device → LAN Search → Click the Camera Shown → Click DONE → Connection is completed.

DEFAULT PASSWORD FOR CAMERAS IS: 0123456789



Secondly, Join to the WIFI

→Click Gear Icon →WIFI Setting→WIFI Manager→ Select the WIFI you like to join→ Insert WIFI PW→ Click DONE→Connecting

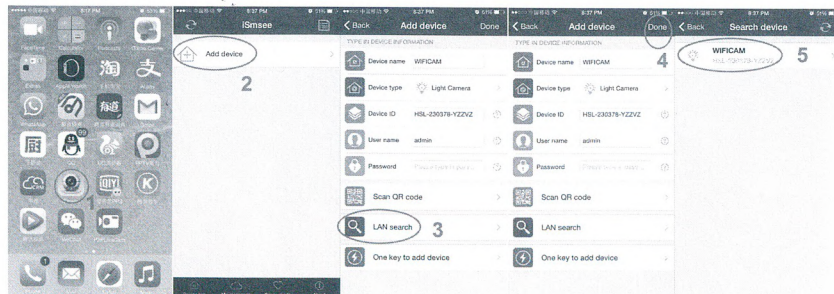


During joining into WIFI, the device will reboot again. Please don't cut off the power while connecting!
IMPORTANT
MAKE SURE THE WIFI CAM JOINED IS THE SAME AS YOUR PHONE CONNECTED.
IF THE CAM CAN'T JOIN TO WIFI SUCCESSFULLY, KEEP PRESSING THE RESET BUTTON ON THE SENSOR UNTIL THE LIGHT REBOOTS.
AND THEN, FOLLOW THE ABOVE STEPS TO TRY AGAIN!

AFTER JOIN THE WIFI SUCCESSFULLY, YOU WON'T FIND LEDCAM XXX FROM THE HOT SPOT ANY MORE. IF YOU WOULD LIKE TO FIND IT AGAIN FROM HOT SPOT, PLEASE REFER TO AP Parameter Setting (HOT SPOT RETRIEVE)

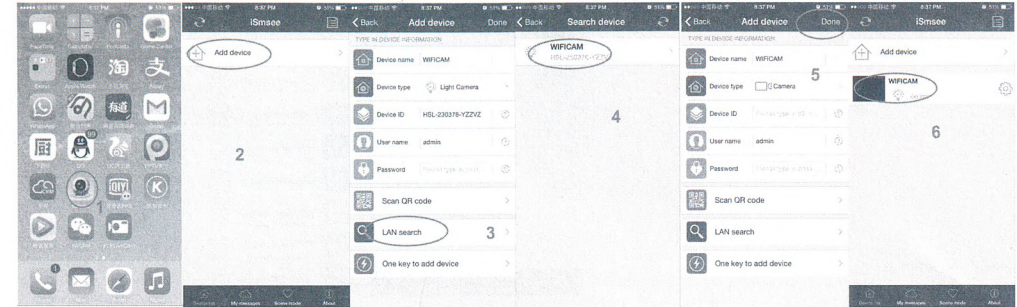
2.2: LAN Cable Connecting

Connect Device to WIFI Router by a LAN Cable and follow the below steps to connect to your phone (make sure the device and your phone share the same WIFI)



2.3: LAN Search

After the device join the WIFI successfully, all people share the same WIFI can add the device to their phones shown as below



AFTER JOIN THE WIFI SUCCESSFULLY, YOU WON'T FIND LEDCAM XXX FROM THE HOT SPOT ANY MORE. IF YOU WOULD LIKE TO FIND IT AGAIN FROM HOT SPOT, PLEASE REFER TO AP Parameter Setting (HOT SPOT RETRIEVE)

2.4: AP Parameter Setting (HOT SPOT RETRIEVE)

Follow the below steps to finish AP Parameter Setting.

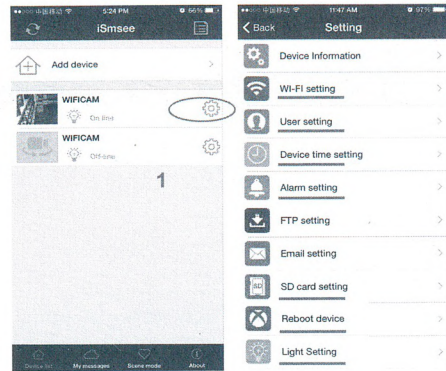
And then you can find the LEDCAMXXX again from the Hot Spot.

→Gear Icon→AP Parameter Setting→Done→Reboot Device→Settings→WIFI→LEDCAMXXX



3. Settings

Click gear ICON which circle as below, you will see all setting list shown.



3.1: Alarm Setting

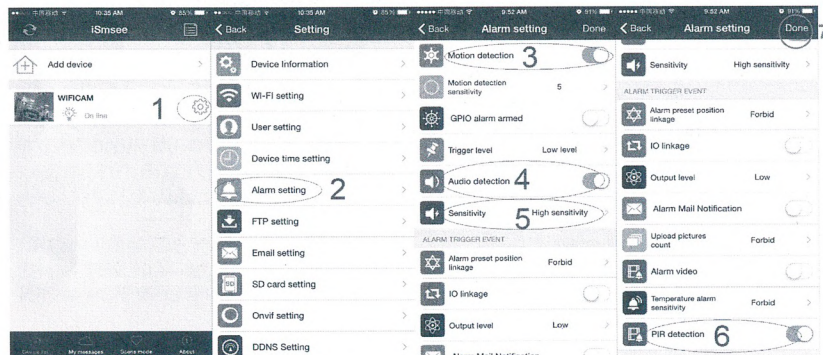
Please follow the belows steps to proceed with alarm settings.

Step 3: Motion detection, open this function, it will send push notification once the image changes.

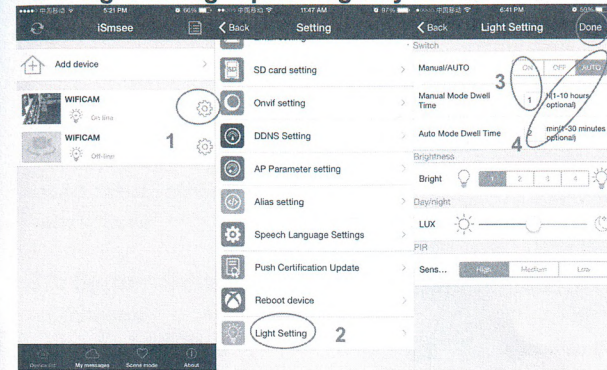
Step 4: Audio detection, open this function, it will send push notification once voice is detected.

Step 6: PIR detection, open this function, it will send push notification once any thermal object movement is detected.

Step 7: Click Done everytime after you finish every setting.



3.2: Light Setting—Operate light by Phone



Step 3:

—Manual/AUTO setting:

Click ON and then click DONE (step 5): Light will turn on. Lighting time depends on the timer you set.

—Manual Mode Dwell Time (this is for ON setting)

When you set the light with ON mode, there is 1-10Hs for option. If you set 2 hours. The light will turn on and stay for 2 hours and then turn off and will be into AUTO mode automatically.

Click OFF and then click DONE (step 5): Light will turn off.

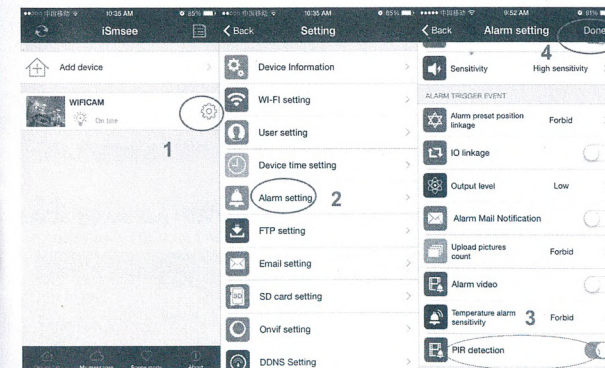
Step 4:

Click AUTO and then click DONE (step 5): Light will be into AUTO mode which means light can be turn on automatically when it is detected at DARK environment. Light will turn off after DELAY TIME you set automatically.

Auto Mode Dwell Time (this is for AUTO setting)

When you set this light into AUTO mode, there is 1-30minutes for option. If you set 10 minutes, it means that light will stay on for 10 minutes after detected and then will turn off.

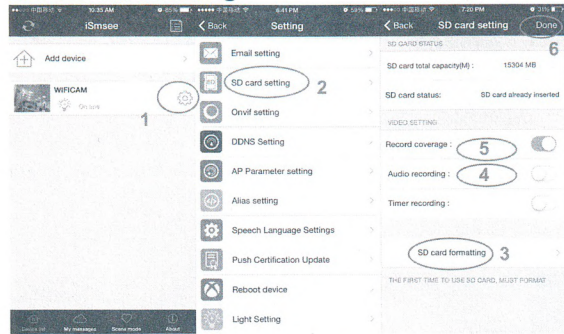
NOTED: PLEASE PAY ATTENTION TO THAT WITH AUTO MODE, LIGHT CAN BE TURN ON AT DARK ENVIROMENT AFTER TRIGGERED AND MAKE SURE THE SETTING IS CORRECT WHICH SHOWN AS BELOW!



Remarks:

If you would like to switch among these 3 functions, please note that you should follow rules, never switch from ON to AUTO nor from AUTO to ON directly. Please follow a rule: ON→OFF→AUTO, or AUTO → OFF →ON.

3.3: SD Card Setting



Step 3: SD Card must be formatted for the first time usage.

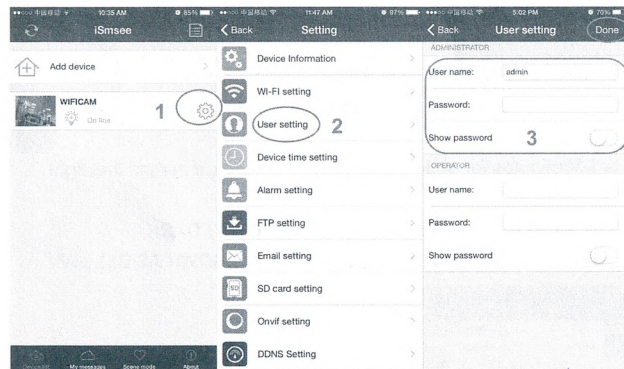
Step 4: Audio Recording, with the function open, videos will be recorded with sound.

Step 5: Record Coverage, with the function open, videos will be recovered automatically.

SD Card Support: FAT/FAT32, maximum memory size up to 64GB. 64GB SD card can record with 5 days with Audio Recording mode and 7 days without Audio Recording mode.

3.4: User Setting

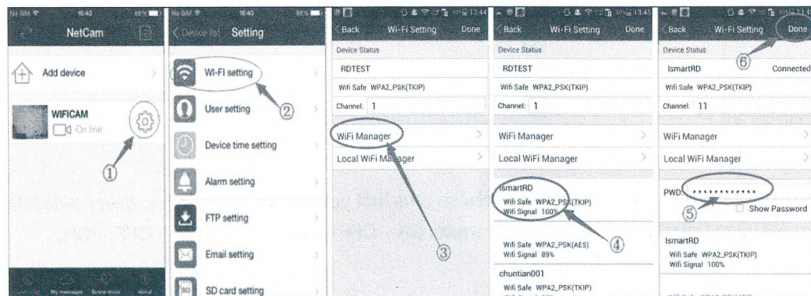
You can set password here, after setting password, no one can connect WIFI camera without password.



3.5: WIFI Setting

When WIFI changes, please follow the below steps to reset or re-connect the device.

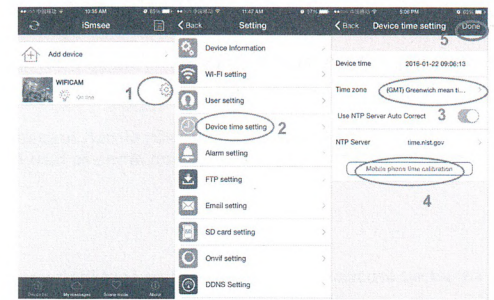
→Gear Icon→Click WI-FI setting→Click WiFi Manager→Select the chosen WIFI →Enter the WIFI password→Click Done.



3.6: Device Time Setting

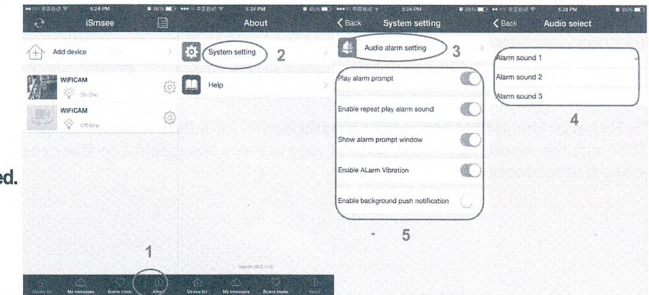
Make sure the time shown on recording image is the same with your local time, please set device time for the first time used.

- Click the gear ICON
- Click Device Time Setting
- Choose your time zone
- Click “Mobile phone time calibration”
- Click “Done”



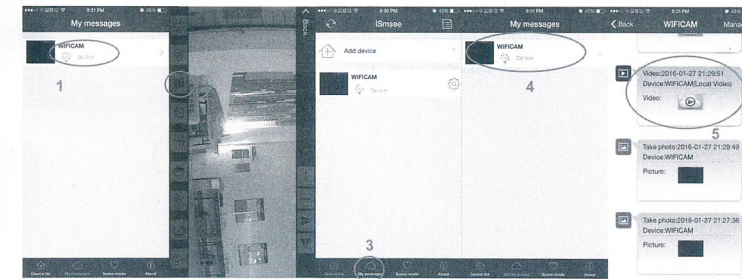
3.7: System Setting

- Click About
- Click System Setting
- Click Audio Alarm Setting
- 3 different sounds can be chosen
- You can have other settings here if needed.



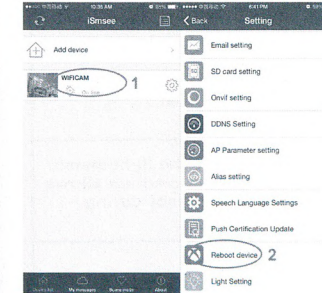
3.8: Manual Recording Setting

Click the device you connected to open it→Click the recording screen and click the ICON to record the video and click again to stop it→ Click My Message, all videos recorded by phone can be checked here.→Click the videos stored in My Message and you can review the videos you took.



3.9: Reboot Device Setting

If you click Reboot Device Setting, device will be reboot.



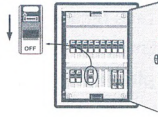
Remark: If need help, please click the “About”—“Help” in the APP, there is detailed description for each icon. The Android and IOS interface styles are basically the same, both of them can be operated according to this instructions.

4. Light Installation

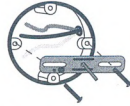
ASSEMBLY INSTRUCTIONS

CAUTION: PRODUCT MUST BE INSTALLED BY A QUALIFIED ELECTRICIAN!

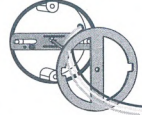
1. Turn OFF power to work area at main circuit breaker or fuse box.
CAUTION: Do not rely on wall switch alone to turn off power



2. Attached crossbar (D) to junction box (not included) with two screws (B)

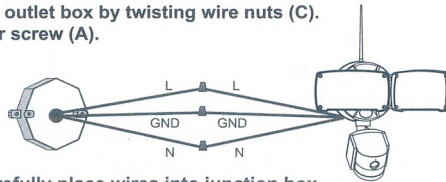


3. Remove the protective paper barrier from the adhesive face of the EVA gasket (F). Pull out the supply wires through the openings in the gasket and adhere the gasket to the crossbar and outer edge of the round surface mount electrical box.

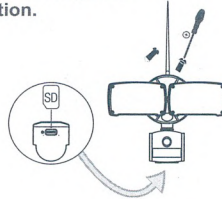


4. Connect wires from fixture to the wires from outlet box by twisting wire nuts (C). Ground wires can be connected by NUT(C) or screw (A).

BLUE WIRE(NEUTRAL)=N
BROWN WIRE(LIVE)=L
GROUND WIRE=GND



5. Make sure wire connections are secure. Carefully place wires into junction box
Position the light wall plate over the crossbar (D). Insert the NUT into the ring (E)
Mount the light onto the crossbar and secure with the NUT(E). DO NOT overtighten.
6. Assemble the Antenna(G) to the light and adjust to your desired position.
7. Insert the SD card (not included)



5. Troubles Shooting

Problem	Problem Cause	Corrective Action
Light does not come on at night when motion is detected	<ol style="list-style-type: none"> 1. No power is being delivered to the light. 2. Another light source is causing the security light to think it is daylight 3. Wiring inside electrical box came loose. 	<ol style="list-style-type: none"> 1. Check that circuit breaker and /or wall switch power is on. 2. Turn off surrounding lights and /or re-aim the sensor head. 3. After turning power off to the light, reconnect any loose wiring.
Security light comes on during the day	Sensor is in a shaded area and is fooled into thinking it is nighttime.	<ol style="list-style-type: none"> 1. Shine a flashlight onto the light sensor. 2. Relocate security light to where allows enough light enter the sensor during daytime.
The Light flashes	There is lighting, arc welding, mobile sources or other such unstable light	Avoid to irradiate by such light source