



Meaningful Innovation.

WEEE Number: 80133970

# INSTRUCTION MANUAL

## STAND LAMP

### TECHNICAL DATA

MODEL	VT-1230
SKU	11826
WATTS	60W
INPUT POWER	AC:220-240V,50/60Hz
IP RATING	IP44
HOLDER	E27 [Bulb not included]
UNIT COLOR	MATTE BLACK
MATERIAL	Aluminium + PLASTIC
DIMENSION	200x200x330mm



**03** YEAR  
WARRANTY\*

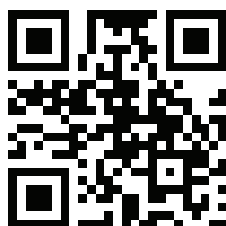
### INTRODUCTION & WARRANTY

Thank you for selecting and buying V-TAC product. V-TAC will serve you the best. Please read these instructions carefully before starting the installation and keep this manual handy for future reference. If you have any another query, please contact our dealer or local vendor from whom you have purchased the product. They are trained and ready to serve you at the best. The warranty is valid for 3 years from the date of purchase. The warranty does not apply to damage caused by incorrect installation or abnormal wear and tear. The company gives no warranty against damage to any surface due to incorrect removal and installation of the product. The products are suitable for 10-12 Hours Daily operation. Usage of product for 24 Hours a day would void the warranty. This product is warranted for manufacturing defects only.!

### WARNING

- Ensure Electricity is switched off before installation
- Please read through all following instruction before installing the unit.
- User should prepare necessary accessories and spare parts (Not Provided)
- Installation must be performed by a qualified electrician
- Proper grounding should be ensured throughout the installation.

RoHS  



### MULTI-LANGUAGE MANUAL QR CODE

Please scan the QR code to access the manual in multiple languages.

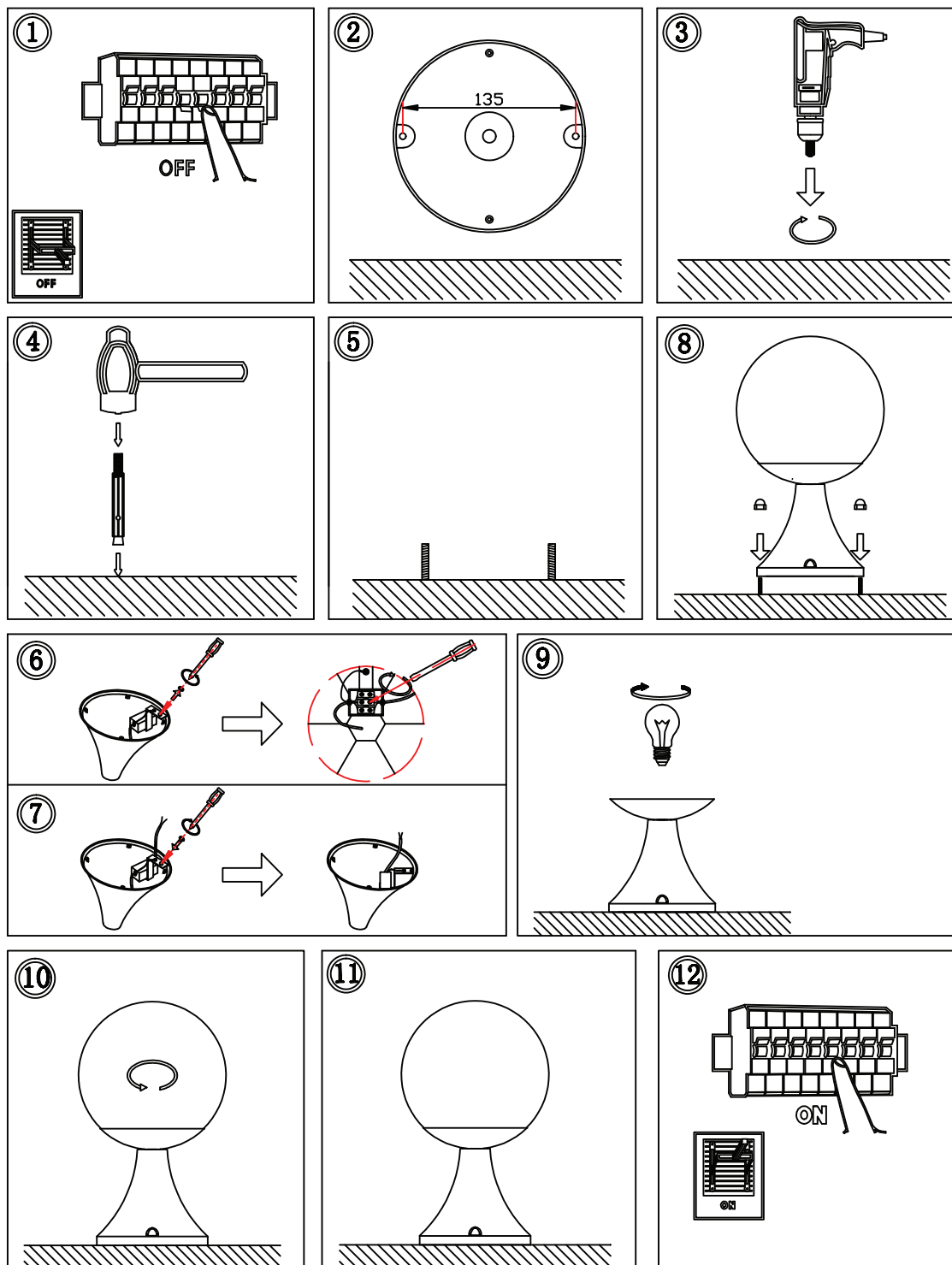


This marking indicates that this product should not be disposed of with other household wastes.



Caution, risk of electric shock.

## INSTALLATION DIAGRAM



### INSTALLATION INSTRUCTION

1. Turn off the power.
2. Mark drilling area with 135mm gap.
3. Drill the holes in the ground.
4. Dig the plastic into the hole.
5. Fix the screws in the holes.
6. Connect supply leads with terminal brown (L) to brown, blue (N) to blue and greenish-yellow ( ) to greenish-yellow.
7. Tighten the screws to fix the wires.
8. Tighten the nuts to fix down the lamp.
9. Open the lamp and install the bulb in the lamp.
10. Fit the Lamp with clockwise rotation
11. Check whole fitting is correct.
12. Turn on the Power